

MATERIAL HANDLER
SE450M

SHANTUI MAKES CONSTRUCTION EASIER



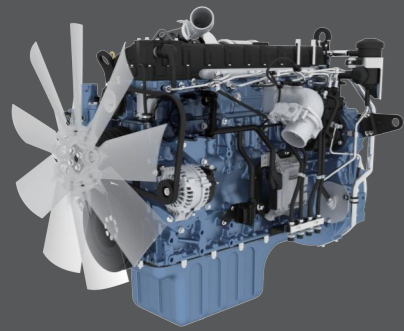
SHANTUI CONSTRUCTION MACHINERY CO.LTD.

Service Hotline: 400-000-1000

ADD: No. 58, G327 Highway, Jining City, Shandong, CHINA
WEB: www.shantui.com

- Shantui products are continuously being updated and improved. We reserve the right to modify designs and parameters without prior notice to users.
- If there are discrepancies between the product configuration and appearance in the photos and the actual machine model, the actual item shall prevail.

ENERGY SAVING & HIGH EFFICIENCY



● HIGHLY RELIABLE ENGINE

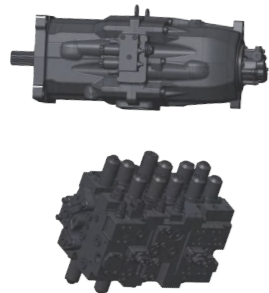
Equipped with Weichai WP10H high-end customized engineering machinery engine featuring strong power and high torque reserve coefficient, ensuring strong power, and reliable performance. The engine adopts technologically advanced ECU with independent intellectual property rights, German-branded hardware, proprietary functions, and control logic developed specifically for excavators. Compared to competitors, it saves 15% in fuel consumption.

● HYDRAULIC SYSTEM

Customized Linde hydraulic components increase main pump displacement by 15% compared to competitors. Positive-flow hydraulic system, high-end hydraulic components, ensuring smooth operation and coordinated movements. Simulated analysis optimizes system pipelines, reducing oil return pressure, enhancing grabbing force, and improving efficiency during heavy-duty operations.

● EFFICIENT WORK

Equipped with a professional material grabbing arm, effectively increasing the working radius and improving operational efficiency. Employing a double arm cylinder installed in a lower position enhances the grabbing force and dumping speed during material stacking. New lifting structure with a lifting height of over 2.5 meters, providing a broader field of vision and effectively enhancing operational efficiency.



SAFE & COMFORTABLE

● NEW CAB

New cab, integrating rich functionalities, technologically intelligent, providing comfortable driving, ensuring safety and reliability, offering an expansive view, enhancing the operational experience." Equipped with a 10.1-inch intelligent touchscreen and a one-key start function, utilizing a fully fitted IPS screen with a wide viewing and high brightness, ensuring visibility even under sunlight. The user-friendly new generation of intelligent electronic control system empowers you to master the operation.



● LIFTING BUFFER TECHNOLOGY

Adopting cab lifting hydraulic buffer technology, the impact is smaller, the speed is faster, and it is safer.

● DUAL-LEVEL EMERGENCY SWITCH

A dual-level emergency switch for lifting, ensuring the safe and effective descent of the cab during special hazardous situations.

● ALARM FUNCTION

Equipped with walking and lifting alarm functions, alerting the driver and surrounding personnel to the operating environment to enhance overall operational safety.



RELIABLE & DURABLE

● HIGH STRENGTH GRAB BUCKET

The main body utilizes high-strength steel plates, while the grabbing plates employ imported wear-resistant steel plates, reinforced durability and extending the lifespan.



● HEAVY DUTY CHASSIS

The 40t heavy-duty chassis, standardly equipped with dual-tine heavy-duty tracks, boasting excellent wear resistance and doubling the lifespan.



● ENHANCED LIFTING STRUCTURE

Reinforced lifting structure utilizing dual cylinders for a more aesthetically pleasing and sturdy design.



● COUNTERWEIGHT

Increased counterweight enhances overall operational stability.

● CYLINDER

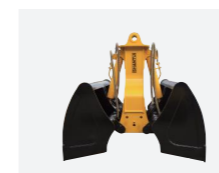
Equipped with an explosion-proof valve to effectively prevent rapid descent of the attachment in the case of pipeline rupture, thus avoiding accidents. Designed with a cushioning mechanism to reduce impact and increase its longevity.

● ANGLE SENSOR

Incorporating angle sensors enables the setting of different working ranges based on various attachments, preventing tipping and collisions.



MULTI-FUNCTIONAL ATTACHMENT



Shell Bucket

Bucket capacity (m ³)	2.0
Operation	Coal, sand, ore



Orange-peel Grab

Bucket capacity (m ³)	1.0
Operation	Steel scrap



Electromagnetic Sucker

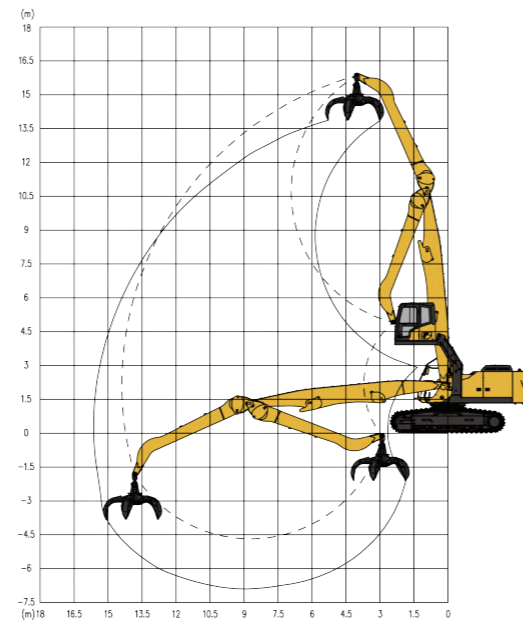
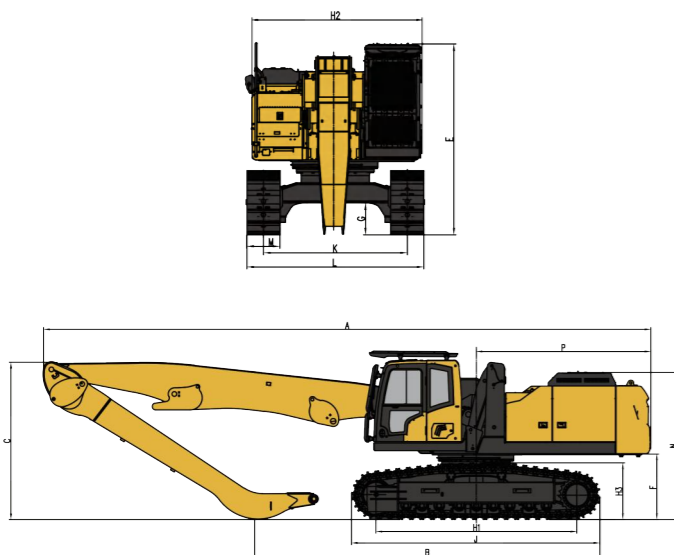
Generator (kW)	20
Power (kW)	17
Sucker diameter (mm)	1600
Operation	Steel slag

Overall dimensions (mm) Boom length: 8600 mm Arm length: 6800 mm

A Overall length	12448
B Ground contact length (in transport condition)	7075
C Overall height(to top of boom)	3224
D Overall width	3200
E Overall height (to top of cabin)	3452
F Ground clearance of counterweight	1350
G Minimum ground clearance	580
H Tail swing radius	3653
H1 Wheel track	4112
J Track length	5095
K Track gauge	2600
L Track width	3200
M Track shoe width	600
N Tail height	3018
H2 Swing platform width	3045
P Distance from center of swing to tail	3580
H3 Track height	1161

Working range (mm)

Maximum grab height	13868
Maximum grab radius	15642
Maximum grab depth	6900



Specification

Engine	
Model	WEICHAI WP10H(Tier III)
Type	High pressure common rail, water cooling,6-cylinder in line, Turbocharging
No. of cylinder, Bore and Stroke(mm)	6*116*139
Displacement (L)	9.5
Rated power (kW/rpm)	247/2000
Hydraulic system	
Hydraulic pump form	Positive flow
Maximum displacement of main pump (L/min)	2x210+15
Cab	
Cab lifting height (mm)	2560
Travel system	
Travel speed(km/h)	3.0/4.9
Drawbar pulling force(KN)	315
Gradeability	70%
Swing system	
Maximum swing speed (r/min)	0-9
Swing system pressure(Mpa)	31
Operating weight and ground contact pressure	
Operating weight	45000
Ground contact pressure (kPa)	68.3
Orange-peel grab	
Orange-peel grab capacity (m3)	1.0
Working pressure of grab bucket (MPa)	28
Oil capacity	
Fuel tank(L)	620
Cooling system(L)	35
Engine oil(L)	30
Hydraulic oil tank/system capacity (L)	300/420