

SHANTUI

DH13-B3

Crawler Dozer



Engine Model: Weichai WP6G140E22
Gross Power: 105kW(141hp)
Operating Weight: XL:13,400kg

Linde Hydrostatic Travel Drive
electronic control

DH13-B3 SPECIFICATIONS

ENGINE

Engine	Weichai WP6G140E22
Emission	Stage II
Rated revolution	2200rpm
Gross power	105kW(141hp)
Net power	100kW(134hp)
Displacement	6.75L(412cu.in)
Max. torque	560Nm(413lb.-ft.)/1400-1600rpm
Min. fuel consumption	195 g/kw.h

DRIVE SYSTEM

Drive system	Independent dual-circuit electric control hydrostatic drive, intelligent matching of speed-load	
System overflow pressure	43500KPa(6309psi)	
Traveling speed	Forward	0-10km/h(5.6mph)
	Backward	0-10km/h(5.6mph)
Max. theoretical traction force	212kN(47692lb.)	
Steering	Independent drive of track at both sides to ensure the full power output for pivot steering and steering with load	
Brake	Regular closed multi-disk brake	
Final drive	Primary spur gear + primary planetary reduction	

CHASSIS SYSTEM

	XL	LGP
Type	Semi-rigid type suspension	Semi-rigid type suspension
Track shoe type	Single grouser	Single grouser
Track gauge	1780mm(70in.)	2000mm(70in.)
Width of track shoe	560mm(22in.)	760/700mm(30/27.6in.)
Track grounding length	2640mm(104in.)	2640mm(104in.)
Track grounding area	29568cm ² (4583sq.in.)	40128cm ² (6220sq.in.)/36960cm ² (5729sq.in.)
Number of track shoe	40 pcs/single side	40 pcs/single side
Grounding pressure (standard configuration)	44.4kPa(6.56psi)	34.0kPa(4.93psi)/36.9kPa(5.35psi)
Number of carrier roller	2pcs/single side	2pcs/single side
Number of track roller	7pcs/single side	7pcs/single side
Pitch	190mm(7.48in.)	190mm(7.48in.)

REFILL CAPACITY

Fuel capacity	270L(71gal.)
Coolant liquid capacity	26.5L(7.0gal.)
Engine oil capacity	16L(4.2gal.)
Hydraulic oil tank	66L(14.5gal.)
Final drive	20L(5.33gal.)

OPERATING WEIGHT

	XL	LGP
Operating weight (Traction frame)	13400kg(29542lb.)	13920kg(30688lb.)
Operating weight (Ripper)	14417kg(31784lb.)	-

BLADE

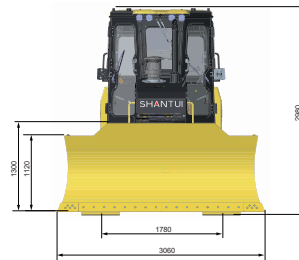
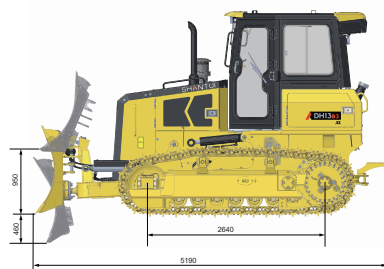
	XL	LGP
Blade type	PAT	PAT
Blade capacity	3.07 m ³ (4.0cu.yd.)	-

DIMENSION

	XL	LGP
Machine height	3047mm(120in.)	3047mm(120in.)
Track grouser height	50mm(2.0in.)	50mm(2.0in.)
Ground clearance	365mm(14.4in.)	365mm(14.4in.)
Machine length (with draw bar)	5190mm(194in.)	5190mm(194in.)
Machine length (without draw bar)	4848mm(191in.)	4848mm(191in.)
Max. lifting height of blade	950mm(37in.)	950mm(37in.)
Max. digging depth of blade	460mm(18.1in.)	460mm(18.1in.)
Digging angle of blade	55°±3°(deg.)	55°±3°(deg.)
Blade width	3060mm(120in.)	3530mm(139in.)
Blade height	1300mm(51.2in.)	1300mm(51.2in.)
Max blade turning angle on ground	25°(deg.)	25°(deg.)
Machine length when blade in max turning angle	2783mm(110in.)	3200mm(126in.)
Max tilt height of blade	460mm(18in.)	510mm(20in.)
Vertical distance from left track shoe outside to blade outside when blade in max turning angle	16mm(0.6in.)	14mm(0.6in.)
Track shoes outside width	2340mm(92in.)	2760mm(109in.)
Vertical distance from right track shoe outside to blade outside when blade in max turning angle	427mm(17in.)	424mm(14in.)
Min turning radius	3324mm(131in.)	3400mm(134in.)

RIPPER

Type	Three shanks ripper
Weight	1035kg(2282lb.)
Max. ripping depth	500mm(20in.)
Max. lifting height	600 mm(23.6 in.)
Ripper length (at deepest ripping)	1600mm(63in.)
Ripper length (at highest point)	1230mm(48in.)
Ripper width	1759mm(69in.)
Tilt angle (at highest point)	28°(deg.)
Ripping width	1696mm(66.7in.)
Distance between ripper teeth	800mm(31.5in.)



* THE SPECIFICATIONS ARE SUBJECT TO CHANGE WITHOUT NOTICE. THE PICTURES MAY INCLUDE OPTIONS. THE ACTUAL COLOR & APPEARANCE OF THE PRODUCT MAY DIFFER FROM WHAT IS SHOWN.

SHANTUI CONSTRUCTION MACHINERY CO., LTD.

ADD: No. 58, G327 Highway Jining City, Shandong, CHINA
 TEL: +86-537-2909369
 FAX: +86-537-2311219
 EMAIL: trade@shantui.com
 WEB: www.shantui.com

SHANTUI
 LET'S MAKE CONSTRUCTION EASIER