

LET'S MAKE CONSTRUCTION EASIER

GROUP PRODUCTS



SHANTUI

# DE26-X2

BATTERY ELECTRIC  
BULLDOZER



Onboard energy 350 kW.h  
Operating Weight 25,500 kg  
Blade type Semi-U blade

LET'S MAKE CONSTRUCTION EASIER



Shantui Social

SHANTUI CONSTRUCTION MACHINERY CO., LTD.  
ADD: No. 58, G327 Highway, Jining City, Shandong, CHINA  
TEL: +86-537-2909369  
FAX: +86-537-2311219  
EMAIL: trade@shantui.com  
WEB: www.shantui.com

**SHANTUI**  
LET'S MAKE CONSTRUCTION EASIER

# DE26-X2 BATTERY ELECTRIC BULLDOZER

SHANTUI



- STRONG POWER, FAST OUTPUT RESPONSE, AND HIGH EXPLOSIVE FORCE
- OVERALL OPERATING EFFICIENCY INCREASED BY >10%
- COMPARED WITH ONE TRADITIONAL FUEL MACHINE
- OVERALL OPERATING COST REDUCED BY >60%
- 3~4H WORKING DURATION UNDER HEAVY-LOAD CONDITION
- 4~5H WORKING DURATION UNDER MEDIUM-DUTY/LIGHT-DUTY CONDITION
- INSTALLED WITH HIGH AIRTIGHTNESS CAB
- <73DB DRIVER'S PAROTIC NOISE



## POWER BATTERY SYSTEM

- The high-capacity lithium iron phosphate power battery in total onboard energy of 350kW.h is installed and the double-charger fast charging interface is applied to guarantee 3~4 working hours under heavy-load condition and 4~5 working hours under medium-load and light-duty conditions.



## INTELLIGENT TEMPERATURE CONTROL SYSTEM

- The power battery thermal management system (BTMS) + intelligent temperature control system are applied to realize the high-efficiency cooling of power battery, motor, and motor control unit.
- The radiator adopts integrated modular design to ease the maintenances.



## TRANSMISSION SYSTEM

- The machine adopts wheel direct-drive transmission system and the load-adaptive technology to realize loaded steering and pivot steering, featuring stepless speed regulation and high mobility and efficiency.
- Featuring fast power output response, high explosive force, and strong power, it can continuously output constant traction force under high speed to achieve 400KN maximum traction force and improve the drive efficiency by >20% and the overall operating efficiency by >10%.
- The machine is provided with three-power operating modes at choice depending on the actual working load to realize the reasonable matching among power, efficiency, and energy consumption.



## CONTROL SYSTEM

- The traveling joystick adopts single electronic control joystick, featuring flexible operations and high handiness and comfort.
- The suspended single pedal structure features small volume, large foot space, and high operating comfort.



## ADAPTABILITY TO OPERATING CONDITIONS

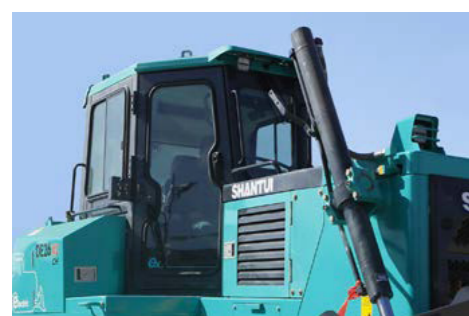
- With low noise and zero emission, it's suitable for the working conditions in enclosed spaces, coal mines, and power plants.
- The chassis system features long ground length, large ground clearance, stable driving, and excellent trafficability.
- The straight tilting blade, semi-U blade, rock blade, wetland straight tilting blade, and environmental sanitation blade can be installed depending on the specific working condition, featuring high working capacity. The standard LED working lamps of higher illumination intensity improve the illumination capability during nighttime operations to achieve higher safety and reliability.





## SPECIFICATIONS

Model	DE26-X2
<b>PERFORMANCE PARAMETERS</b>	
Operating mass (kg)	25500
Minimum turning radius (mm)	4210
Ground pressure (kPa)	68.5
<b>POWER BATTERY SYSTEM</b>	
Onboard energy (kW.h)	350
<b>OVERALL DIMENSIONS</b>	
Overall dimensions of machine (mm)	6514×3800×3260
<b>DRIVING PERFORMANCE</b>	
Forward speed (km/h)	0-10
Reverse speed (km/h)	0-10
Ground clearance (mm)	440
<b>CHASSIS SYSTEM</b>	
Track gauge (mm)	2120
Width of track shoes (mm)	610
Ground length (mm)	3050
Number of track shoes (Each-sided/piece)	41
Track pitch (mm)	216
Number of carrier rollers (Each-sided)	2
Number of track rollers (Each-sided)	7
<b>OIL TANK CAPACITY</b>	
Working hydraulic oil tank(L)	143
<b>WORKING DEVICE</b>	
Blade type	Semi-U blade
Width of blade (mm)	3762
Height of blade (mm)	1400
Lifting height of blade (mm)	1247
Shoveling depth (mm)	540



### DRIVING/RIDING SYSTEM

- The integral ergonomic hexahedral cab features large space, excellent vision, and good airtightness.
- The installed high-airtightness cab remarkably improves the driving comfort, with the driver's parotic noise at <73dB.
- The extensively adjustable seat provides the driver with the most comfortable operating posture.
- The standard A/C and heating system, cigarette lighter, USB charging port, radio, sun shade, and fire extinguisher provide more abundant humanized driving/riding experience and guarantee the comfortable and safe driving/riding environment.
- The safety passage system of the machine guarantees the driver's safety.

### ELECTRIC SYSTEM

- The installed 7" high-definition display clearly shows the machine data information.
- The double-coupler fast charging interface is provided to fully charge the battery within 1.5h.
- The core electric and hydraulic parts feature stable quality and high reliability.

### EASY MAINTENANCES

- The machine adopts modular structure design, featuring simple structure, easy disassembling and assembling, handy repairs, low failure rate, and easy maintenances.

\* The specifications are subject to change without notice. The pictures may include options. The actual color & appearance of the product may differ from what is shown.

# DE26-X2 BATTERY ELECTRIC BULLDOZER

DE26-X2 bulldozer is the world's first maximum power battery electric bulldozer, featuring zero emission, green power, and high energy-saving and environmental friendliness, and is mainly applied for the operating conditions including power plants, coal mines, and steel works.

With the 350kW.h power battery as the onboard energy source, this machine is equipped with double-charger fast charging interface to guarantee 3~4 working hours under heavy-load condition and 4~5 working hours under medium-load and light-duty conditions. The three-motor system, wheel direct-drive transmission system of traveling motor, and the load-adaptive control technology are applied to realize fast power output response, high explosive force, and strong power at high speed and improve the overall operating efficiency by >10%. The high-irtightness cab is installed to realize <73dB operator's parotic noise and remarkably improve the driving comfort. Compared with traditional fuel equipment, the overall operating cost is reduced by >60%. The intelligent temperature control system is applied for the battery and motor to realize the high-efficiency cooling of power battery, drive motor, and controller. The high-voltage system adopts three-stage safety protection to guarantee safety. The installed 7" high-definition display features friendly human-machine interaction interface.

## "STAYING TRUE TO THE MISSION OF GREEN DEVELOPMENT"

Shantui is devoted to the realization of "Emission peak and carbon neutrality" and is continuously leading the industry's high-quality development.

### ECONOMIC BENEFITS

Compared with a fuel bulldozer, the battery electric bulldozer can save RMB 243.5 per hour and RMB 730,000 per year.

Unit economic benefit	Fuel bulldozer	Battery electric bulldozer
Unit price of energy consumption (RMB/L; RMB/kWh)	8.5	0.6
Average energy consumption per hour (L; kWh)	35	90
Cost per unit hour (RMB/h)	2975	54
Yearly difference between fuel and electricity (RMB/h)	The battery electric bulldozer saves RMB 243.5/h.	

Yearly economic benefit (Based on 3,000h/year)	Fuel bulldozer	Battery electric bulldozer
Yearly working hours (h)	3000	3000
Cost per unit hour (RMB/h)	2975	54
Yearly cost (RMB/h)	892500	162000
Yearly saved amount of electric battery bulldozer (RMB/year)	RMB 730,500/year	

### SOCIAL BENEFITS

Environmental protection benefits	Fuel bulldozer	Battery electric bulldozer
Yearly working hours (h)	3000	3000
CO2 emission (Ton)	2975	54
Environmental protection benefits of battery electric bulldozer, Unit price of carbon trading (RMB/ton)	Approximately RMB 50~60/ton RMB 15,000 revenue increased per year	
Note: The comprehensive electricity price is RMB 0.6/kWh. The calculation is made based on 2.63kg CO2 emitted from every liter of combusted diesel.		