

# SHANTUI

# L46-B5

## Wheel Loader



Engine Model: Weichai WP6G175E22  
Gross Power: 129kW@2200rpm  
Operating Weight: 13,900kg  
Bucket Capacity: 2.5m<sup>3</sup>

New Appearance  
better performance

# L46-B5 SPECIFICATIONS

## ENGINE

Emission	Tier 2 / Stage II
Model	Weichai WP6G175E22
Rated Power	129kW@ 2,200 rpm
Max Torque	680 N · m
Displacement	6.75 L
Number of Cylinders	6

## LOADER ARM PERFORMANCE

Tipping Load - Full Turn	≥92KN
Bucket Breakout Force	≥136KN
Maximum Dump Angle at Full Height	45°
Dump Clearance at Full Height Discharge	2975
Dump Reach at Full Height Discharge	1055
Maximum Hinge Pin Height	4050
Maximum Digging Depth, Bucket Level	20mm
Bucket Capacity	2.5 m <sup>3</sup>
Operating Weight	13900kg

## TRANSMISSION

Transmission Type	Planetary box
Torque Converter	Single stage, two-phase
Maximum Travel Speed, fwd	36.3 km/h
Maximum Travel Speed, rev	15.2km/h
Number of Speeds, fwd	2
Number of Speeds, rev	1

## AXLES

Differential Front Type	-
Differential Rear Type	-
Axle Oscillation	±12°

## STEERING

Steering Configuration	Articulated
Steering System Pressure	16 Mpa

## BRAKES

Service Brake Type	Caliper disc brake
Service Brake Actuation	Air over Hydraulic
Parking Brake Type	Soft axis control
Parking Brake Actuation	Mechanical

## TIRES

Tire Size	20,5-25
-----------	---------

## HYDRAULIC SYSTEM

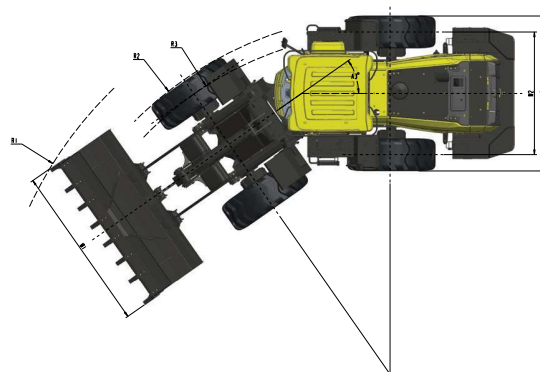
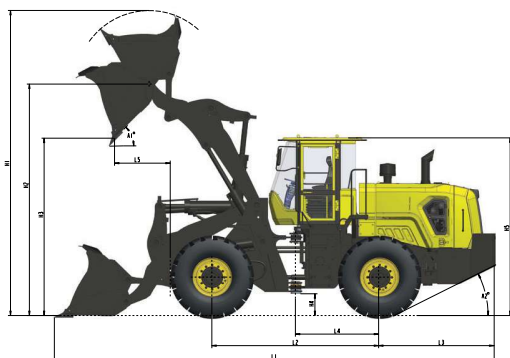
Main Pump Type	Gear
Main Relief Pressure	18 Mpa
Raise time	5,6 S
Total Cycle Time	9.4 S

## SERVICE CAPACITY

Fuel Tank	230L
Hydraulic oil Tank	160L
Engine Oil	16L
Axles, each	24L
Transmission	45L
Cooling System	30L

## DIMENSIONS

Length	7790mm
Width	2498mm
Height	3290mm
Wheelbase	3000mm
Wheel Tread	1900mm
Ground Clearance	440mm
Turn Angle, Either Side	38°
Turning Radius, Outside of Tire	5620mm
Turning Radius, Center of Tire	5360mm
Turning Radius, Bucket Carry	6260mm



\* THE SPECIFICATIONS ARE SUBJECT TO CHANGE WITHOUT NOTICE. THE PICTURES MAY INCLUDE OPTIONS. THE ACTUAL COLOR & APPEARANCE OF THE PRODUCT MAY DIFFER FROM WHAT IS SHOWN.



Shantui Social

## SHANTUI CONSTRUCTION MACHINERY CO., LTD.

ADD: No. 58, G327 Highway, Jining City, Shandong, CHINA  
 TEL: +86-537-2909369  
 FAX: +86-537-2311219  
 EMAIL: trade@shantui.com  
 WEB: www.shantui.com

