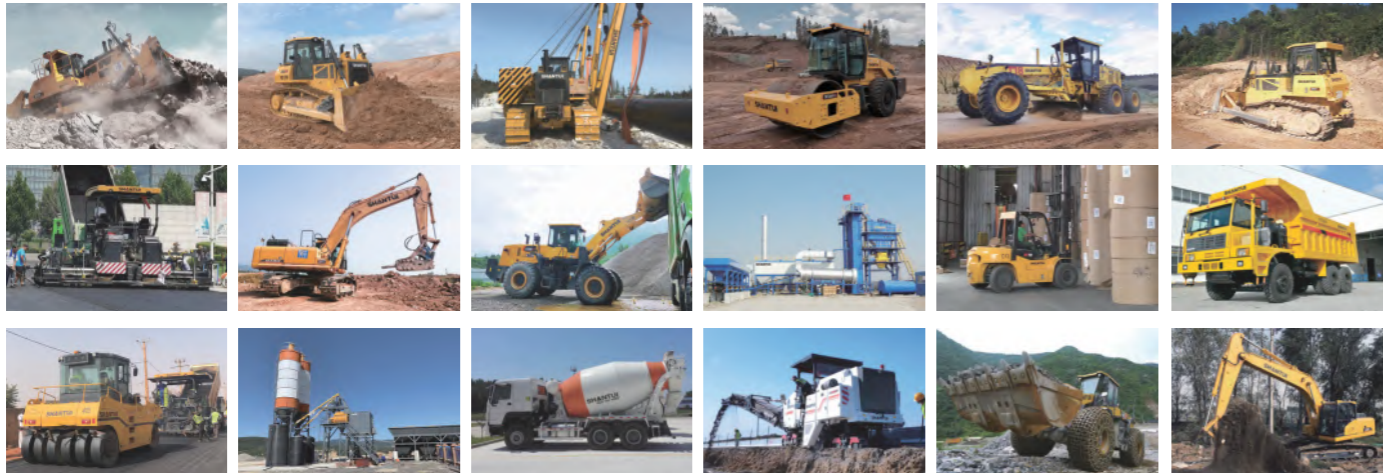


LET'S MAKE CONSTRUCTION EASIER

GROUP PRODUCTS



SHANTUI

**SD34B3**  
Crawler Dozer



Shantui Social

SHANTUI CONSTRUCTION MACHINERY CO., LTD.  
ADD: No. 58, G327 Highway, Jining City, Shandong, CHINA  
TEL: +86-537-2909369  
FAX: +86-537-2311219  
EMAIL: trade@shantui.com  
WEB: www.shantui.com

**SHANTUI**  
LET'S MAKE CONSTRUCTION EASIER

Engine Model: CUMMINS NTA855-C360S10  
Gross Power: 257kW (345hp) @2000  
Operating Weight: 36,000kg

SHANTUI Torqflow Travel Drive  
electronically controlled

# WALK-AROUND

# SHANTUI

## EASY OPERATION



- PPC (Proportional Pressure Control) joysticks controls blade & ripper.
- PCCS (Palm Command Control System) joystick controls all directions and speed movements.
- Electric control shift transmission, high efficiency, smooth travel.

## NEWLY DEVELOPMENT CABIN

- Enlarged cab, integrating ROPS and FOPS functions, space improved by 26% and the view is wide. Pressurized cab technology makes the noise down to 78.4dB.
- New integrated A/C with fresh air system. Luxury interior with Bluetooth radio, cell phone charging, storage box, tea cup holder, ashtray, sunshade. LCD screen all-round display of operating parameters, preset gears, automatic fault checking and maintenance tips.

## SHIG GOLDEN POWERTRAIN

- Cummins NT855-C360S10 engine
- Gross power is 257kW
- Rated speed is 2000rpm



SD34B3

## MULTIFUNCTIONAL ACCESSORIES

- Standard drawbar
- Three-shanks ripper (optional)
- Single-shank ripper (optional)

## INCREASED PRODUCTIVITY

- Support point of lifting cylinder is in front, optimize force on the front hood.

## EASY MAINTENANCE

- Fully-opened side shield, external working valve, Centralized transmission and steering filter elements, easy and convenient for maintenance.



## COMFORT



### TRANSMISSION SYSTEM

The key components of transmission system as torque converter, gearbox, central drive and final drive are made by Shantui. The engine and torque converter are perfectly matched, and the transmission efficiency can reach up to 90%. The transmission system is mature and reliable, with strong parts versatility and low failure rate.



### MULTI-FUNCTION MONITOR

The multi-function monitor provides status of the machine, as well as Self-Diagnostic information and maintenance reminder.



### COMFORTABLE ENVIRONMENT

Equipped with A/C fitted on rear top of cabin, radio, fan, sunshade curtain for front and side windows, 24V lighter, USB charging port for maximum comfort.



### PPC & PCCS CONTROL

PPC (Proportional Pressure Control) joysticks controls blade & ripper. PCCS (Palm Command Control System) joystick controls all directions and speed movements.

## DURABILITY

### SHIG GOLDEN POWERTRAIN

SHANTUI transmission & undercarriage system, all belong to SHANDONG HEAVY INDUSTRY GROUP(SHIG), the world famous power system manufacture & supplier. Cummins NTA855 engine special designed for SD34B3, delivers flywheel power of 257 kW (345 HP) at 2000 rpm. The engine is turbo-charged and features direct fuel injection to maximize power and fuel efficiency. Low fuel consumption, parts universality and low maintenance cost.



### LONG TRACK-ON-GROUND

Long track-on-ground with 7 track rollers improves machine stability, grading and dozing performance. SHANTUI's track frame design using thicker box section material and fewer welded components to increase rigidity and strength.



### OPTIONAL ATTACHMENTS

Standard equipped with drawbar. Other optional attachments available such as single-shank and three-shanks ripper for ground breaking.



### WIDE OPEN ACCESSIBLE MAINTENANCE

The SD34-B3 machine design is not only concern about operators' comfort, it also offers convenience on the daily maintenance. Wide-open maintenance access for engine, hydraulics and electrical A/C systems. Centralized hydraulic pressure testing location. All daily maintenance can be performed efficiently at ground level.

## SPECIFICATIONS

ENGINE	
Model	CUMMINS NTA855-C360S10
Emission	STAGE I
Rated speed	2000rpm
Gross power	257kW 345hp @2000
Net power	235kW 320hp @2000
No. of cylinder-bore×stroke	6-139.7mm*152.4mm
Displacement	14.01L
Max. torque	1509N.m@1300-1500rpm
Cooling system	Mechanic fan
DRIVE SYSTEM SD34B3 XL	
Drive system	Manufactured by SHANTUI, with high working efficiency, low breakdown rate; torqflow transmission, 3 gears forward and 3 gears backward, All steering, direction, and speed changes are made by a left-hand single joystick control.
Traveling speed	Forward F1 0~3.6km/h F2 0~6.6km/h F3 0~11.5km/h
Traveling speed	Reverse R1 0~4.4km/h R2 0~7.8km/h R3 0~13.5km/h
Max. traction force	325kN
Torque converter	3-element, single stage, 1-phase
Transmission	Electric control, planetary gear and torqflow transmission hydraulically actuated, forced lubrication
Bevel gear shaft	Spiral bevel gear, single-stage speed reduction, splash lubrication
Steering clutch	Wet multiple disc, disc spring loaded, hydraulically actuated, hand operated, interconnected with steering brake.
Brake	Wet, contracting band, foot operated with hydraulic booster
Final drive	spur gear, double reduction ,splash lubrication
UNDERCARRIAGE SD34B3 XL	
Type	Swing type of sprayed beam, suspended structure of equalizer bar
Track shoe type	Single grouser
Track gauge	2140mm
Width of track shoe	560mm/610mm/660mm/710mm
Length of track on ground	3150mm
Ground contact area	35280cm <sup>2</sup>
Number of track shoe	41pcs/single side
Grounding pressure	87kPa
Number of carrier roller	2pcs/single side
Number of track roller	7pcs/single side
Pitch	228.6MM
REFILL CAPACITY	
Fuel tank	620L
Cooling system	85L
Engine oil	47L
Hydraulic oil tank	128L
Transmission	185L
Final drive	55L/single side
OPERATING WEIGHT SD34B3 XL	
Operating weight (standard)	36000kg

BLADE SD34B3 XL	
Blade type	Semi-U
Blade capacity	9.01m <sup>3</sup>
DIMENSION SD34B3 XL	
A Machine height (without ROPS)	3660mm
B Track grouser height	80mm
C Ground clearance	500mm
D Machine length (with draw bar)	7014mm
F Max. lifting height of blade	1400mm
G Max. digging depth of blade	560mm
H Digging angle of blade	55°±3°(deg.)
I Blade width	4130mm
J Blade height	1706mm
O Width from end of left track shoe to end of right track shoe (standard)	2700mm
RIPPER	
Type	Single-shank ripper
Weight	3980kg
Q Max. ripping depth	1250mm
R Max. lifting height	955mm
S Ripper length (at deepest ripping)	2930mm
U Departure angle (at highest lifting)	30°

