

LET'S MAKE CONSTRUCTION EASIER

GROUP PRODUCTS



SHANTUI

DE17-X

ELECTRIC DRIVE BULLDOZER



Shantui Social

SHANTUI CONSTRUCTION MACHINERY CO., LTD.
 ADD: No. 58, G327 Highway, Jining City, Shandong, CHINA
 TEL: +86-537-2909369
 FAX: +86-537-2311219
 EMAIL: trade@shantui.com
 WEB: www.shantui.com

SHANTUI
 LET'S MAKE CONSTRUCTION EASIER

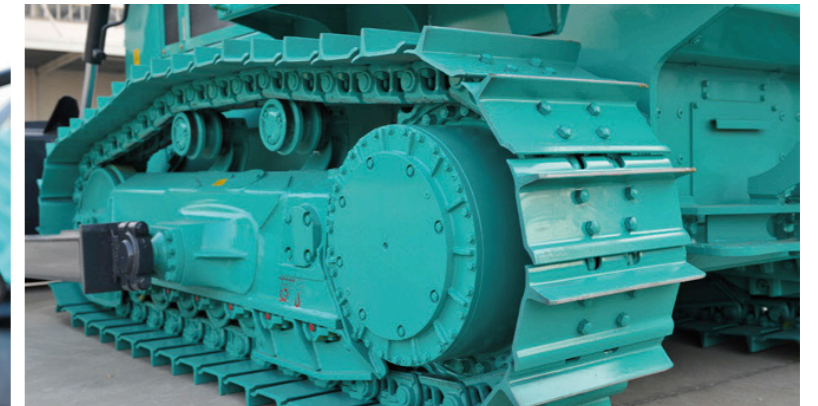
| | |
|----------------------|----------|
| ONBOARD ENERGY | 228kW.h |
| HEAVY-LOAD CONDITION | 4-5h |
| OPERATING WEIGHT | 18,750kg |

SHANTUI Electric Drive
 Electronically controlled

DE17-X Electric Drive Bulldozer

- Capable of continuous output of constant traction force
- Constant traction force output >10%
- 4~5h working duration under heavy-load condition
- 6~8h working duration under medium-duty/light-duty condition
- Compared with one traditional fuel machine
- The overall operating cost is reduced by >60%.
- Installed with high airtightness cab
- Noise around operator's ears <76dB





Control system

- Both traveling system and working device are operated by single electronic control joysticks, featuring flexible operations and high handiness and comfort.
- The suspended single pedal structure features small volume, large foot space, and high operating comfort.

Adaptability to operating conditions

- With low noise and zero emission, this machine is applicable for the special working conditions with high emission requirements. The chassis system features long ground length, large ground clearance, stable driving, and excellent trafficability.
- The straight tilting blade, semi-U blade, rock blade, wetland straight tilting blade, environmental sanitation blade, three-shank ripper, and hydraulic winch can be installed depending on the specific working condition, featuring high working capacity. The standard LED working lamps of higher illumination intensity improve the illumination capability during nighttime operations to achieve higher safety and reliability.
- The speed change hydraulic system adopts the independent motor variable speed pump, featuring reliable and stable performances.



Electrical System

- The installed 7" high-definition display clearly shows the machine data information.
- It's provided with double-coupler quick charging interface to realize 120KW double-coupler quick charging.
- The core electric and hydraulic parts feature stable quality and high reliability.



Driving system

- The integral ergonomic hexahedral cab features large space, excellent vision, and good airtightness.
- The installed high-airtightness cab remarkably improves the driving comfort, with the operator's parotic noise at <76dB.
- The extensively adjustable seat provides the operator with the most comfortable operating posture.
- The standard A/C and heating system, cigarette lighter, USB charging port, radio, sun shade, and fire extinguisher provide more abundant humanized driving experience and guarantee the comfortable and safe driving environment.
- The safety passage system of the machine guarantees the operator's safety.



Power battery system

- It's powered by high-performance lithium iron phosphate power battery in total installed capacity of 240Kw.h to realize 4~5h working duration under heavy-duty condition and 6~8h working duration under medium-duty/light-duty condition.



Transmission system

- The machine is applied with wheel-end direct drive system and load-adaptive technology to realize loaded steering and pivot steering. With stepless speed regulation and high flexibility and efficiency, it features excellent operation performances in narrow sites.
- With fast response and high burst force, the power output can continuously output constant traction force and embody strong power at high speed.
- The machine is provided with three-power operating modes at choice depending on the actual working load to realize the reasonable matching among power, efficiency, and energy consumption.

Intelligent temperature control system

- BTMS + intelligent control system can realize the high-efficiency cooling of power battery, drive motor, and motor controller.
- The distributed module arrangement for power system and working system realizes the modular design for the heat dissipation of the machine.



Easy Maintenance

- The machine adopts modular structure design, featuring simple structure, easy disassembling and assembling, handy repairs, low failure rate, and easy maintenance.

SPECIFICATIONS

| PERFORMANCE PARAMETERS | DE17-X |
|---|---------------------------|
| Operating weight (kg) | 18750 |
| Minimum turning radius (mm) | 3745(Straight tilt blade) |
| Pressure to the ground (kPa) | 61.3 |
| POWER BATTERY SYSTEM | |
| Onboard energy | 228kW.h |
| OVERALL DIMENSIONS | |
| Overall dimensions of machine (mm) | 5350×3388×3100 |
| DRIVING PERFORMANCE | |
| Forward speed (km/h) | 0-10 |
| Reverse speed (km/h) | 0-10 |
| Ground clearance (mm) | 370 |
| CHASSIS SYSTEM | |
| Center distance of tracks (mm) | 1880 |
| Width of track plate (mm) | 560 |
| Ground contact length (mm) | 2675 |
| Number of track shoes (One-sided/piece) | 39 |
| Caterpillar track pitch (mm) | 203 |
| Number of carrier rollers (One-sided) | 2 |
| Number of track rollers (One-sided) | 7 |
| FUEL TANK CAPACITY | |
| Working hydraulic oil tank (L) | 65 |
| WORKING DEVICE | |
| Blade type | Straight tilt blade |
| Width of blade (mm) | 3388 |
| Height of blade (mm) | 1149 |
| Lifting height of blade (mm) | 1010 |
| Shoveling depth (mm) | 520 |

* THE SPECIFICATIONS ARE SUBJECT TO CHANGE WITHOUT NOTICE. THE PICTURES MAY INCLUDE OPTIONS. THE ACTUAL COLOR & APPEARANCE OF THE PRODUCT MAY DIFFER FROM WHAT IS SHOWN.

